

PBJ
DESIGNHOUSE
1968

THE PBJ TABLE CONCEPT



The PBJ Table Concept

designed by Morten Svendsen

The PBJ Table Concept offers 3 different shapes of table tops such as rectangular, ellipse and round.

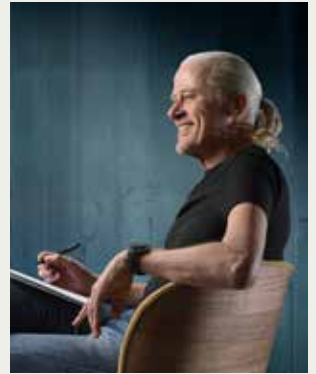
Each of these table tops - with a choice of either a slim or a soft edge - can be ordered with three different leg designs as illustrated on page 7.

With all of these options you can combine your preferred table top with the leg design that suits you best.

Once you have 'designed' your dining table, you can select a sideboard, highboard or display cabinet from our ranges Collum, Malli, Oculus or Galaxy.

Take a look, and find the design that fits your home perfectly.

Enjoy.



Morten Svendsen, owner of PBJ

Collum rectangular



Collum dining table, Artus chair, Comoda bench and Collum sideboards - all in light oak lacq.

Corna rectangular



Corna dining table, Cor chair, Oculus XL-sideboard in light oak lacq.

Malli rectangular



Malli dining table, Cliff arm chair and Collum sideboards - all in light oak lacq.

Collum Super Ellipse



Collum Super Ellipse, Artus chair, Collum Display cabinet in light oak lacq.

Corna Super Ellipse



Corna Super Ellipse, Cor chair, Oculus XL-sideboard in dark oak lacq.

PBJ Designhouse - Danish Design since 1968

PROUD TRADITIONS

Since 1968 PBJ Designhouse has had a tradition of bringing together furniture architects and certified cabinet makers.

When creativity and quality unite, the result reaches new heights.

PBJ Designhouse is known for its attention to detail, good craftsmanship and the intelligent functionalities of all furniture, also known for making furniture in the proud classic Danish design traditions, but always with a modern touch.

PBJ was founded in 1968 by Per Buhl Jørgensen, wherefrom the name PBJ. He mostly exported to USA, but today PBJ Designhouse furniture is sold worldwide.

Since 1996 the company has been owned by Morten Svendsen, who is a designer and highly qualified certified cabinet maker himself. Morten develops many PBJ designs himself, he is keen to choose designs based on his personal taste, but also in accordance with the market needs. He prefers to develop functional designs with tasteful and simple expressions.

The company is 100% Danish owned. In 2011 we moved the production to Poland, where we have our own factory. Here we constantly develop in modern technology and skilled labourforce. Sales office, design and showroom are still in Denmark - where it all began in 1968.

Malli Super Ellipse



Malli Super Ellipse, Titan veneer chair, Malli sideboards. in Light oak lacq.

Collum Round



Collum Round dining table, Artus chair, Collum sideboards in light oak lacq.

Corna Round



Corna Round dining table, Alius chair, Oculus, Artus lounge in light oak lacq.

Malli Round



Malli Round dining table, Titan veneer chair, Malli sideboard in light oak lacq.

Legs for PBJ Table concept

RECTANGULAR
& ELLIPSE



Collum legs
NO 770100



Corna legs
NO 774100



Malli legs
NO 772100

ROUND



Collum round legs
NO 770110



Corna round legs
NO 774110



Malli Round legs
NO 772110

Slim tabletop



Soft tabletop



Choose the soft table top with a solid edge profile - classic and soft in its expression, or the minimalistic slim edge profile for a sharp modern look.

Tabletop Rectangular

Dining table rectangular

Rectangular dining table with the possibility of extension at each end. 8-12 or 10-14 seats.

no 770175 - L 175 W 95 H 74 cm

no 770240 - L 240 W 95 H 74 cm

no 770050 - 1 pcs. extension leaf L 50 W 95 cm.

Extension leaves to be ordered separately.



The table has integrated storage for the leaves at each end.



Tabletop Super Ellipse

Dining table super ellipse

Super ellipse dining table including butterfly extension in the middle.
6-8 or 10-14 seats.

no 770161 - L 175/240 W 90 H 74 cm

no 770241 - L 240/338 W100 H 74 cm



The table is also available with a fixed table top, in sizes 220, 240 and 260 cm

Dining table super ellipse with fixed tabletop is only with Slim edge and not with solid top plate.

Tabletop Round

Dining table round

Round dining table, with the possibility of 1-2 or 1-4 extension leaves.
4-12, 6-16 or 10-20 seats.

no 770122 - D 122 H 74 cm - max 2 ext.

Option: Version up to max 4 ext.

no 770063 1 pcs. extension leaf - 50 cm.

no 770140 - D 140 H 74 cm - max 2 ext.

Option: Version up to max 4 ext.

no 770064 1 pcs. extension leaf - 50 cm.

no 770160 - D 160 H 74 cm - max 2 ext.

Option: Version up to max 4 ext.

no 770066 1 pcs. extension leaf - 50 cm.

Extension leaves to be ordered separately.



MAKE A FEW CHOICES:

1. SHAPE:

Rectangular

Super Ellipse

Round

2. SIZE:

175 x 95 cm
240 x 95 cm

175/240 x 90 cm
240/338 x 100 cm
Incl. Butterfly ext

D 122 cm
D 140 cm
D 160 cm
Pull-out system for 2 or 4 ext. leaves.

3. EDGE:

Slim edge



Soft edge



4. EXT. LEAVES: Max 2 pcs.

Incl. butterfly ext.

Max 2 or 4 pcs.

5. LEGS:

-Malli



-Collum



-Corna

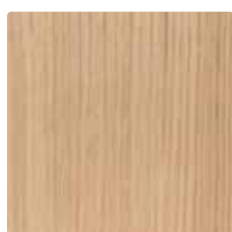


6. Colours and materials

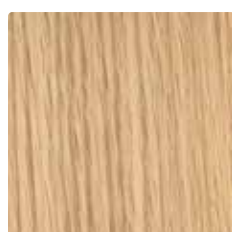
The PBJ Table Collection is available in a wide variety of wood finishes, which can be combined with laminates on the table tops.

WOOD

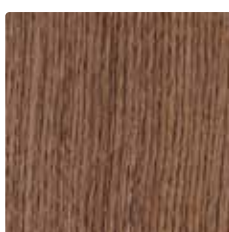
SOLID FOR BASE AND EDGE
VENEER FOR TABLETOP



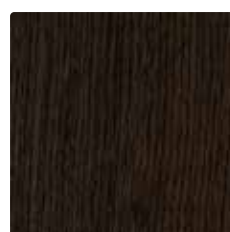
043 Light oak lacq.



045 Oak natural lacq.



047 Dark oak lacq.



049 Smoked oak lacq.

SOLID FOR TABLE TOP - (EXTENSION LEAVES ALWAYS IN VENEER OR LAMINATE - NEVER IN SOLID WOOD)



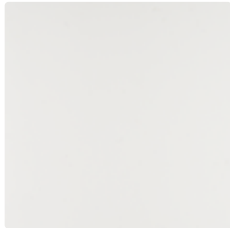
052 Bianco oak oil



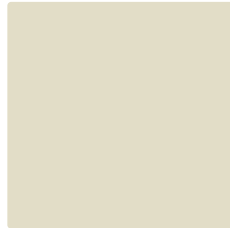
056 Oak natural oil

LAMINATE

HPL (HIGH PRESSURE LAMINATE)



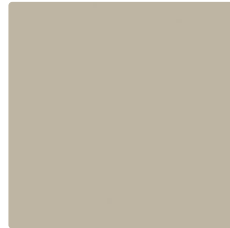
101 White



102 Pomice



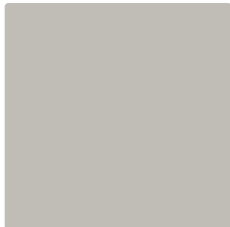
103 Otter



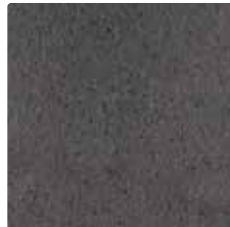
104 Oyster Grey



105 Possum



106 Iron



184 Nero Stone

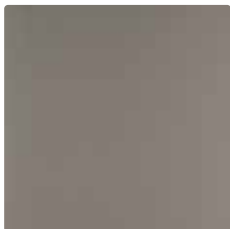
FENIX



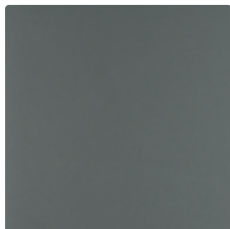
201 Bianco white



204 Deep black



210 Dark warm grey



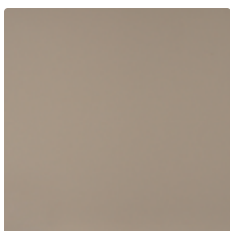
219 Verde



222 Grigio

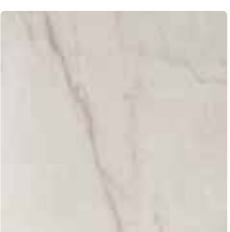


206 Light grey



207 Grey brown

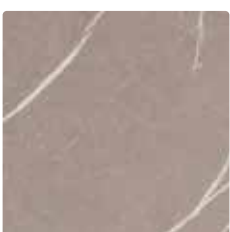
MARBLE



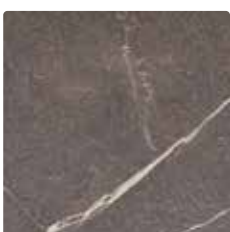
301 Yule white



302 Yule grey



303 Pulpis light



304 Pulpis dark

Home is a place to belong.
Filled with love, harmony, joy ... being you.

Proud craftsmanship with a critical
eye for design and quality.

A family-owned Danish company with our own
production company. We have many years of experience in
refining the details and meeting the customers' requirements.

DANISH DESIGN SINCE 1968



PBJ Designhouse
Skovvænget 2
DK-7860 Spøttrup
Denmark

pbj@pbjdesignhouse.com
pbjdesignhouse.com

Your specialist dealer:

The brochure is subject to technical changes and possible printing errors.